



**SANY**

supported by **Putzmeister**

# **SY56** TRUCK-MOUNTED CONCRETE PUMP

**PRODUCT SPECIFICATIONS**



## EFFICIENCY IN YOUR FLEET

The SANY boom pumps, fully supported by Putzmeister America, combine automotive grade manufacturing with Putzmeister's industry leading Sales, Parts, and Service teams.

The SY56 exemplifies SANY's precise and rigorous manufacturing philosophy and uncompromised focus on safety. Cost-saving measures include wear-resistant parts and 10% decrease in fuel consumption. Save energy thanks to the 25% increase in pump efficiency. The self-diagnosis technology continually monitors more than 200 aspects of the system during operation and can easily detect any faults and reduce troubleshooting time. The SY56 was designed with efficiency and cost-saving measures in mind, bringing value to your fleet.

**Toll-Free Hotline:** 1-800-884-7210

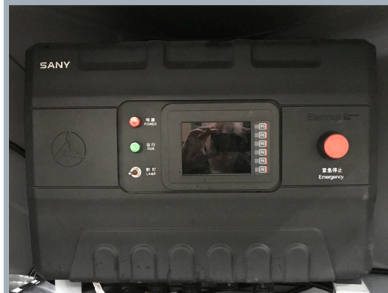
**Parts & Service:** 1-800-890-0269

## FEATURES EXPLAINED

### SANY LIQUID DISPLAY (SYLD):

The SANY Liquid Display (SYLD) interface allows users the ability to quickly conduct diagnostics. The SYLD provides inputs/outputs, bypasses and fault codes to troubleshoot and get your pump operational.

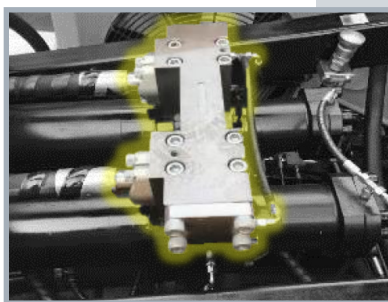
9



### ROD-SIDE/PISTON-SIDE PUMPING, HIGH-LOW PRESSURE SWITCH (SBU):

Logic boxes on the pump allow the operator to switch from low to high pressure pumping with just a switch. High-low pressure changeover switch is located on the back panel.

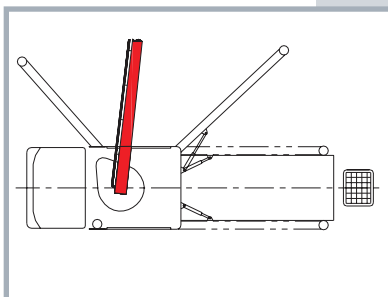
10



### AUTOMATIC OSS:

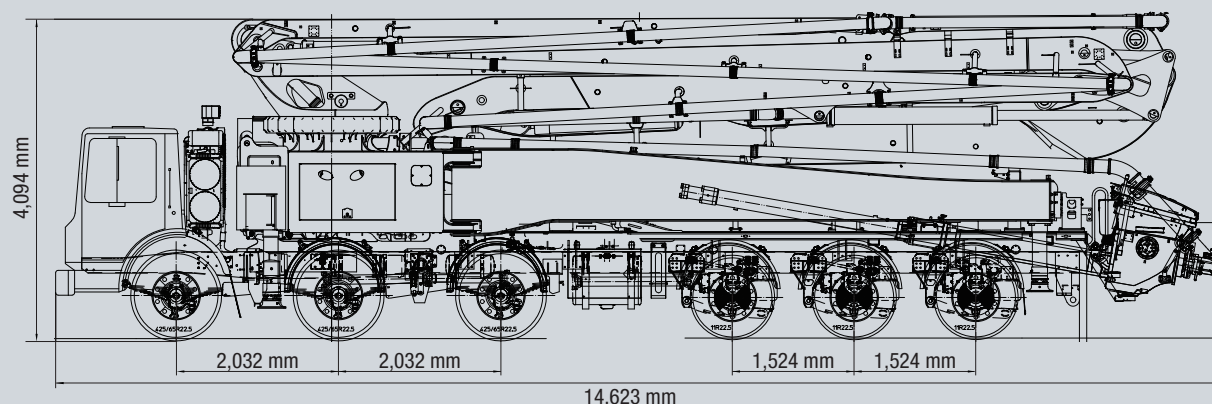
SYMC automatically estimates boom rotation area according to pump mode, outriggers, and stabilization feedback.

11

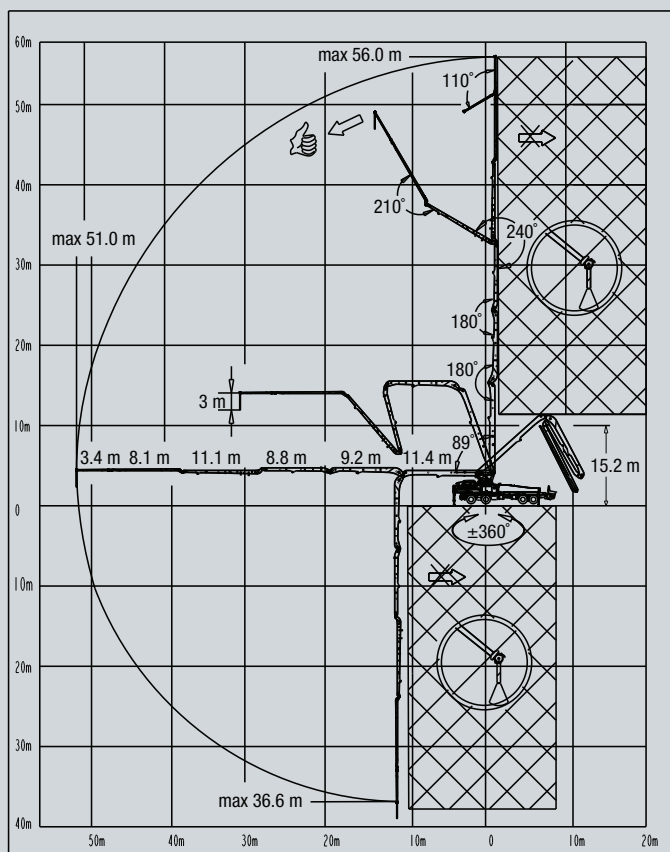


## STANDARD EQUIPMENT

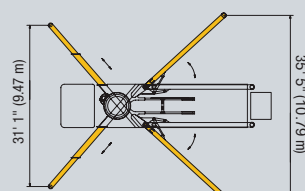
- 158 gal water tank
- Water pump 13 gal/min (183 psi)
- Twin wall delivery line — DN 125, 5.5"
- 3 m end hose — DN 125, 5.5"
- Concrete hopper with agitator
- Central lubrication hopper
- Hopper grate RFID agitator safety switch with bypass monitoring system (select models)
- Hopper worklight
- Side marker lamps
- Chrome-lined material cylinder
- SANY SYLD user interface display
- SANY SYMC control system
- Radio remote control propotional
- 2<sup>nd</sup> remote control transmitter incl. 40 m cable
- Boom pedestal (X-type outriggers and swing out legs)
- OSS one side support
- 4x outrigger pads
- Boom and frame horns, activated at hopper or via remote
- Rear step handrail
- Boom not in cradle warning device
- Guardrail on pedestal
- 2x 12V/24V converter
- Aluminum decking
- Left and right side rear steps
- Foldable hopper lid
- Hopper grate vibrator (remote control)



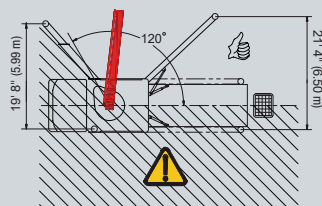
## SY56 RANGE DIAGRAM



## OUTRIGGER DIAGRAM



## OSS DIAGRAM



## SY56

### Machine

|        |                         |
|--------|-------------------------|
| Length | 48' 0" (14.6 m)         |
| Width  | 8' 5" (2.6 m)           |
| Height | 13' 5" (4.1 m)          |
| Weight | 102,960 lbs (46,702 kg) |

### Boom

|                      |                  |
|----------------------|------------------|
| Boom Folding Pattern | RZ               |
| Boom Rotation        | ± 360            |
| Boom Arms            | 6                |
| Vertical Reach       | 183' 9" (56 m)   |
| Horizontal Reach     | 167' 4" (51 m)   |
| Unfolding Height     | 49' 10" (15.2 m) |

### Outrigger

|                        |                         |
|------------------------|-------------------------|
| Type of Outriggers     | X Extension / Swing out |
| Front Outrigger Spread | 31' 1" (9.5 m)          |
| Rear Outrigger Spread  | 35' 5" (10.8 m)         |
| One Side Support (OSS) | Yes                     |

### Pump

|                                  |  |
|----------------------------------|--|
| SANY PCU model                   | SY-200   |
| Main Oil Pump                    | Rexroth  |
| Hydraulic System Configuration   | Open   |
| Hydraulic System Pressure        | 4,641 psi (320 bar)                              |
| Output - Rod Side                | 262 yd <sup>3</sup> /hr (200 m <sup>3</sup> /hr) |
| Output - Piston Side             | 179 yd <sup>3</sup> /hr (137 m <sup>3</sup> /hr) |
| Pressure - Rod Side              | 1,204 psi (83 bar)                               |
| Pressure - Piston Side           | 1,757 psi (121 bar)                              |
| Strokes Per Minute - Rod Side    | 33   |
| Strokes Per Minute - Piston Side | 23   |
| Material Cylinder Diameter       | 10.2" (260 mm)                                   |
| Material Cylinder Length         | 6' 3" (1,900 mm)                                 |

### Hopper

|          |                 |
|----------|-----------------|
| Height   | 55" (1.4 m)     |
| Capacity | 159 gal (600 L) |

†Technical data is based on Mack 126R 12x6/334 chassis selection

# A PROMISE OF PERFORMANCE

When you're putting together a concrete pumping fleet, it's important to work with a company that's with you every step of the way. Rest assured that when you purchase a SANY unit through Putzmeister America, Inc. you have the full backing of our company.

## Supporting you 24/7

- **Customer Support and Service:** In addition to 24/7 technical support, Putzmeister has experienced Field Service Technicians available for Boom Pump start-ups.
- **Warranty Coverage:** Putzmeister warrants SANY Concrete Pumps for 12 months or 2,000 hours (whichever occurs first) after the delivery to the initial purchaser.
- **Parts and Accessories:** Customers can purchase parts through Putzmeister America. Our in-stock inventory includes more than 20,000 parts.
- **Quality and Support:** From questions you may have before your purchase to technical expertise you need right on the job site, you're never alone with Putzmeister. Choose Putzmeister and you get more than equipment. You have a promise of performance.

# SANY

supported by **Putzmeister**



## Putzmeister

1733 90th Street | Sturtevant, WI 53177 USA

T: (262) 886-3200 | (800) 884-7210

F: (262) 884-6338 | [sanyconcretemachinery.com](http://sanyconcretemachinery.com)