



## **SANY FULL LINE PRODUCT GUIDE**

### **Truck-Mounted Boom Pumps**

#### **Putzmeister America, Inc.**

1733 90th Street | Sturevant, WI 53177 USA

T: (262) 886-3200 | (800) 884-7210

F: (262) 884-6338

[Putzmeister.com](http://Putzmeister.com)

**Putzmeister**  
Member of **SANY** Group

# SANY CONCRETE PRODUCTS

## SUPPORTED BY PUTZMEISTER

### DIFFERENT PRODUCT, SAME SUPPORT

The Sany boom pumps, fully supported by Putzmeister America, combine automotive grade manufacturing with Putzmeister's industry leading Sales, Parts, and Service teams.

Notable features of Sany pumps include high-volume pump kits, high-pressure hoppers, and a design built for longevity. The system boasts a reinforcing structural band around the entire hopper which resists flexing under high pressure pumping applications. The streamlined hopper design also makes for easy cleanup due to the reduced 'dead-spots' that typically create concrete build up.

The Sany offering of concrete boom pumps includes 38-, 47-, 56-, and 66-meter models. Sany concrete pumps offer value, simplicity, reliability, and cost-effectiveness.

Toll-Free Hotline: 1-800-890-0269

Parts & Service: 1-800-866-7210

### KEY FEATURES & BENEFITS

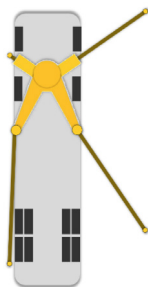
- High-Low Pressure Changeover Switch
- Waterproof Seal on Drive Cylinders
- Dual Piston Retract for emergency procedures and easier parts replacement
- Weatherproof SANY Motion Controller (SYMC), Wiring Harnesses and Electrical Connections
- SANY Liquid Display (SYLD) Interface
- Ability to troubleshoot and diagnose with SYLD interface, status lights on fuses, and labeled wiring
- Ability to rotate 720 degrees in one direction
- Industry Trusted Hydraulic Components
- Rugged Hopper System
- Automatic OSS
- Additional fuel capacity in outrigger leg
- High resistance wear parts
- Emergency Stroke Changeover Kit included
- Dual-Seal design on drive cylinders

### FEATURES EXPLAINED



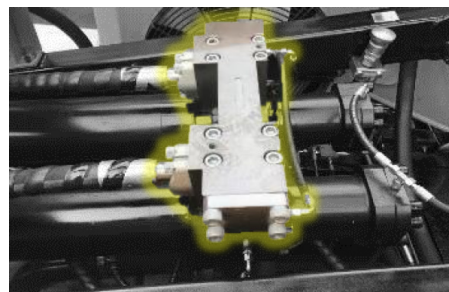
**SANY LIQUID DISPLAY [SYLD]** <sup>9</sup>

The SANY Liquid Display (SYLD) interface allows users the ability to quickly conduct diagnostics. The SYLD provides inputs/outputs, bypasses and fault codes to troubleshoot and get your pump operational.



**AUTOMATIC OSS** <sup>10</sup>

SYMC automatically estimates boom rotation area according to pump mode, outriggers, and stabilization feedback.



**HIGH LOW PRESSURE SWITCH [SBU]** <sup>11</sup>

Logic boxes on the pump allow the operator to switch from low to high pressure pumping with just a switch. High-low pressure changeover switch is located on the back panel.

# SANY BOOM PUMP MODELS AVAILABLE THROUGH PUTZMEISTER AMERICA, INC.

Specifications		SANY SY38	SANY SY47	SANY SY56	SANY SY66
Machine	Length	37' 5" (11.4 m)	41' 3" (12.5m)	47' 11" (14.6m)	56' 8" (17.2 m)
	Width	8' 5" (2.6m)	8' 5" (2.6m)	8' 5" (2.6m)	8' 5" (2.6m)
	Height	12' 10" (3.9 m)	13' 1" (3.9m)	13' 5" (4.0m)	13' 3" (4.0 m)
	Weight	60,300 lbs (27,352 kg)	78,628 lbs (35,665 kg)	102,960 lbs (46,702 kg)	137,420 lbs (62,332 kg)
Boom	Boom Folding Pattern	RZ	RZ	RZ	RZ
	Boom Rotation	360°	360°	360°	360°
	Boom Arms	5	5	6	6
	Vertical Reach	124' 8" (38 m)	154' 2" (47m)	183' 8" (56m)	215' 2" (65.6m)
	Horizontal Reach	111' 6" (34 m)	137' 9" (42m)	167' 3" (51m)	198' 5" (60.5m)
	Unfolding Height	27' 2" (8.3 m)	45' 7" (13.9)	49' 10" (15.2)	55' 1" (16.8m)
	1st Section Length	27' 11" (8.5 m)	32' 0" (9.7m)	37' 4" (11.4m)	45' 0" (13.7m)
	1st Section Rotation	89°	89°	89°	89°
	2nd Section Length	23' 9" (7.2 m)	25' 1" (7.7m)	30' 3" (9.2m)	34' 9" (10.6m)
	2nd Section Rotation	180°	180°	180°	180°
	3rd Section Length	19' 8" (6.0 m)	24' 3" (7.4m)	28' 8" (8.8m)	33' 6" (10.2m)
	3rd Section Rotation	240°	180°	180°	180°
	4th Section Length	20' 0" (6.1 m)	31' 8" (9.6m)	36' 3" (11.1m)	43' 8" (13.3m)
	4th Section Rotation	180°	235°	240°	230°
	5th Section Length	20' 0" (6.1 m)	28' 0" (8.5m)	26' 6" (8.0m)	26' 11" (8.2m)
	5th Section Rotation	265°	215°	210°	180°
	6th Section Length			10' 11" (3.3m)	18' 2" (5.5m)
	6th Section Rotation			110°	100°

# SANY BOOM PUMP MODELS AVAILABLE THROUGH PUTZMEISTER AMERICA, INC.

Specifications		SANY SY38	SANY SY47	SANY SY56	SANY SY66
Outrigger	Type of Outriggers	X Extension / Swing out	X Extension / Swing out	X Extension / Swing out	X Extension / Swing out
	Front Outrigger Spread	20' 2" (6.1 m)	30' 6" (9.3m)	31' 0" (9.4m)	40' 9" (12.4 m)
	Rear Outrigger Spread (m)	23' 4" (7.1 m)	27' 1" (8.2m)	41' 7" (12.6m)	44' 3" (13.5 m)
Pump	One Side Support (OSS)	Yes	Yes	Yes	Yes
	Main Oil Pump	Rexroth	Rexroth	Rexroth	Rexroth
	Hydraulic System Configuration	Open	Open	Open	Open
	Hydraulic System Pressure (bar)	320	320	320	320
	Output - Low Pressure (m3/hr)	160	160	160	160
	Output - High Pressure (m3/hr)	137	137	137	137
	Pressure - Low Pressure (bar)	83	83	83	83
	Pressure - High Pressure (bar)	120	120	120	120
	Strokes Per Minute - Low Pressure	29	29	29	29
	Strokes Per Minute - High Pressure	19	19	19	19
	Material Cylinder Diameter (mm)	260	260	260	260
Hopper	Material Cylinder Length (mm)	1900	1900	1900	1900
	Hopper Height (m)	1.4	1.4	1.4	1.4
Hopper	Hopper Capacity (L)	600	600	600	600



## SANY BOOM PUMPS ON THE JOB



**SALT LAKE CITY, UT**



**CHICAGO, IL**

## SOLUTIONS DELIVERED

Any company can say they do more, but the proof is in the offering. When you're putting together a concrete pumping fleet, it's important to work with a company that's with you every step of the way. Rest assured that when you purchase a Sany unit through Putzmeister America, Inc. you have the full backing of our company in the form of:

### CUSTOMER SUPPORT AND SERVICE

In addition to 24/7 technical support, Putzmeister has experienced Field Service Technicians available for Boom Pump start-ups.

### WARRANTY COVERAGE

Putzmeister warrants Sany Concrete Pumps for 12 months or 2,000 hours (whichever occurs first) after the delivery to the initial purchaser.



### PARTS AND ACCESSORIES

Customers can also purchase parts through Putzmeister America. Our in-stock inventory includes more than 20,000 parts.

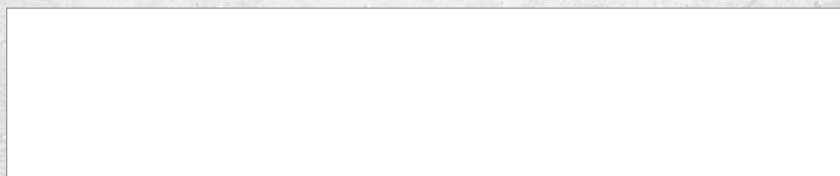


### QUALITY AND SUPPORT

From questions you may have before your purchase to technical expertise you need right on the job site, you're never alone with Putzmeister. Choose Putzmeister and you get more than equipment. You have a promise of performance.



Authorized Distributor



Putzmeister America, Inc.  
1733 90th Street  
Sturtevant, WI 53177 USA

Phone (262) 886-3200  
Toll-free (800) 884-7210  
Fax (262) 884-6338

[PutzmeisterAmerica.com](http://PutzmeisterAmerica.com)

[pmr@putzmeister.com](mailto:pmr@putzmeister.com)