

SY56 Technical Specifications

Length	48' 1"	(14.6 m)
Width	8' 2"	(2.5 m)
Height	13' 1"	(4.0 m)

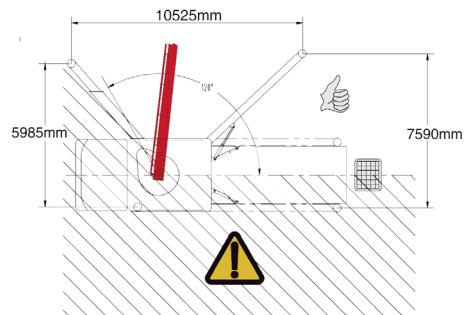
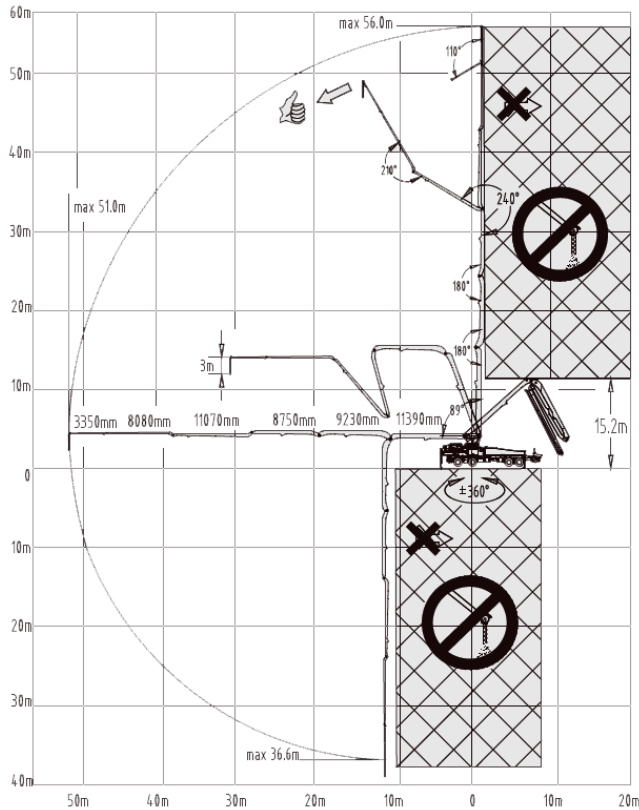
Boom		
Height & Reach		
Vertical reach	183' 6"	(56 m)
Horizontal reach	167' 4"	(51 m)
Unfolding height	49' 8"	(15.2 m)

Folding System	6-arm RZ	
Reach depth	120'	(36.6 m)
End hose length	9' 8"	(3 m)

General Specifications		
Outrigger spread L-R — front	31' 1"	(9.5 m)
Outrigger spread L-R — rear	35' 4"	(10.8 m)

Pump Specifications		
Output	160 yd ³ /hr	(146m ³ /hr)
Pressure	1,203 psi	(83 bar)
Delivery cylinder diameter	10.25"	(260 mm)
Stroke length	74.8"	(1900 mm)

Based on Sany SY56 RZ6-200



Putzmeister America, Inc.
1733 90th Street
Sturtevant, WI 53177 USA

Phone (262) 886-3200
Toll-free (800) 884-7210
Fax (262) 884-6338



SANY
CONCRETE PRODUCTS



SANY Concrete Pumps - Supported by Putzmeister America, Inc.

SY56

Truck-Mounted Concrete Boom Pump

Broadest Value from a Single Provider

SANY Concrete Boom Pumps - Supported by Putzmeister

The SANY pumps supported by Putzmeister America combine the quality of automotive grade manufacturing with the reliability of Putzmeister's elite service and support. The new line of concrete boom pumps will be available in 38M, 49M, 56M, and 66M.

SANY concrete pumps offer surprising value. These pumps are designed around simplicity, cost-effectiveness and reliability. Some of the key attributes that customers have recognized of the pumps already are the easy operation, respectable quality, and low initial investment.

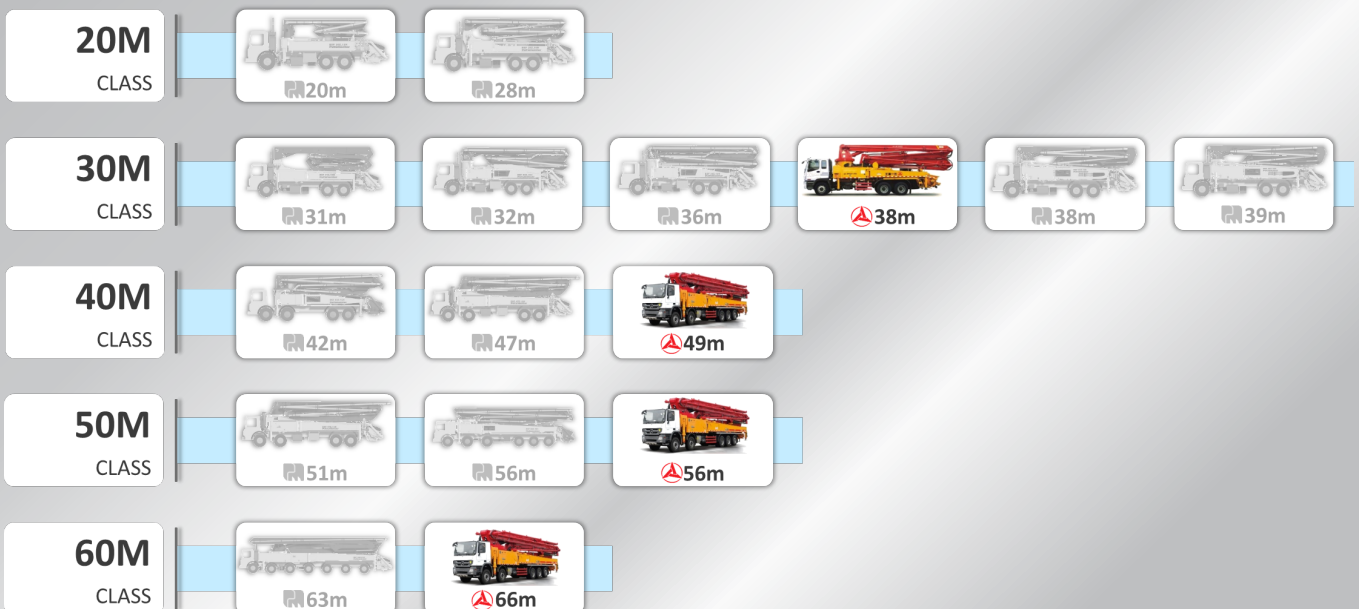
The entire Putzmeister / SANY team is working hard to ensure that with this newly available product line, customers experience the same industry-leading service and support as they do when purchasing Putzmeister equipment.

Toll-Free Hotline
1-800-890-0269

Parts & Service
1-800-884-7210

Top Features & Benefits

1. High-Low Pressure Changeover Switch (SBU)
2. Waterproof Seal on Drive Cylinders
3. Dual Piston Retract
4. Weatherproof SANY Motion Controller (SYMC), Wiring Harnesses and Electrical Connections
5. SANY Liquid Display (SYLD) Interface
6. Ability to self-diagnosis
7. Boom Rotation
8. Trusted Hydraulic Components
9. Rugged Hopper System
10. Automatic OSS



Boom, control and support

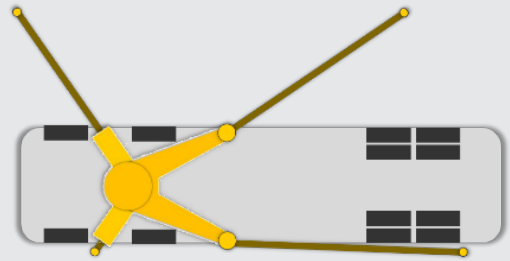
SANY Liquid Display (SYLD)

The SANY Liquid Display (SYLD) interface allows users the ability to quickly conduct diagnostics. The SYLD provides inputs/outputs, bypasses and faults codes to troubleshoot and get your pump to operation.



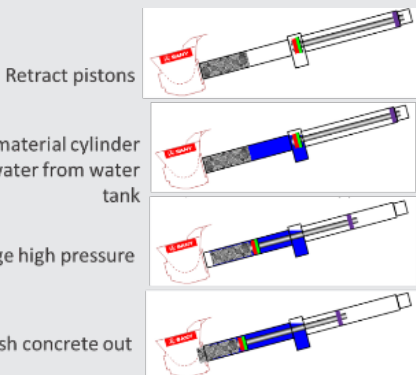
Automatic OSS

SYMC automatically estimates boom rotation area according to pump mode, outriggers, and stabilization feedback.



Dual Piston Retract

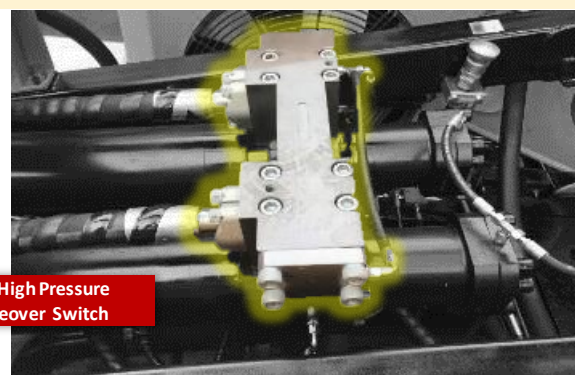
Emergency Clean-Out Procedure
| In emergency situations, you can retract both delivery pistons, inject water into the material cylinder, and force hardened concrete out through hopper. Avoid disassembly of hopper and chipping material out of material cylinders.



High-Low Pressure Changeover Switch (SBU)

Logic boxes on the pump allow the operator to switch from low to high pressure pumping with just a switch.

High-Low Pressure Changeover Switch located on back panel.



Low-High Pressure Changeover Switch