

SY38 Technical Specifications

Length	37' 4"	(11.4 m)
Height	12' 8"	(3.9 m)
Empty weight	58,427 lbs	(26,502 kg)

Boom & Outrigger Specifications

Height & Reach		
Vertical reach	124' 6"	(38 m)
Horizontal reach	111' 5"	(34 m)
Unfolding height	27' 2"	(8.3 m)

5-Section Boom

1st section articulation	89°
2nd section articulation	180°
3rd section articulation	240°
4th section articulation	180°
5th section articulation	265°

1st section length	27' 8"	(8.5 m)
2nd section length	23' 6"	(7.2 m)
3rd section length	19' 6"	(6.0 m)
4th section length	20' 0"	(6.1 m)
5th section length	20' 0"	(6.1 m)

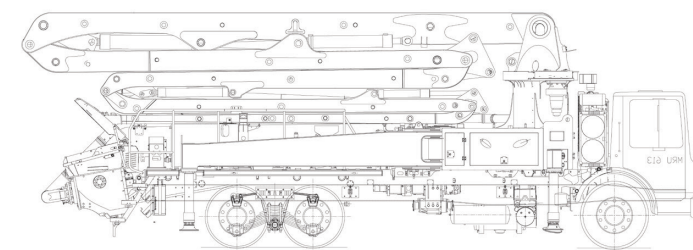
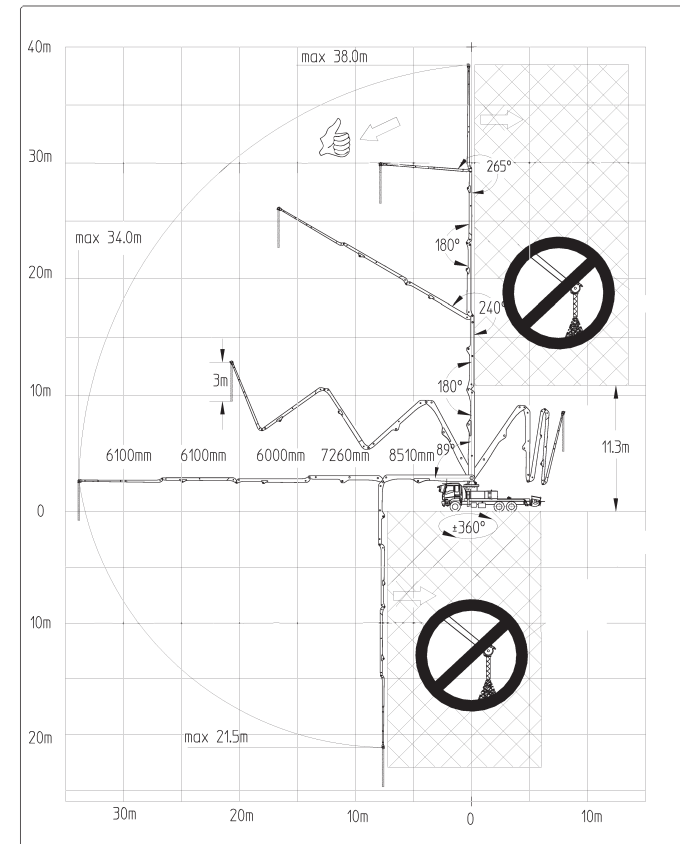
General Specifications

Type of Outriggers	X Extension / Swing Out	
Outrigger spread L-R — front	20'	(6.1 m)
Outrigger spread L-R — rear	23' 3"	(7.1 m)

Pump Specifications

Output — Low-pressure	209 yd ³ /hr	(160 m ³ /hr)
— High-pressure	179 yd ³ /hr	(137 m ³ /hr)
Pressure — Low-pressure	1,203 psi	(83 bar)
— High-pressure	1,755psi	(121 bar)
Delivery cylinder diameter	8.5"	(260 mm)
Stroke length	6' 2"	(1.9 m)
Strokes per min. — Low-pressure	35	
— High-pressure	24	
Hydraulic system	Open	Open
Hydraulic system pressure	4,641psi	(320 bar)
Material Cylinder Diameter	10.3"	(260 mm)
Material Cylinder Length	6' 11"	(2100 mm)

Based on Sany SY65271THB 38 380C-8



SANY Concrete Pumps - Supported by Putzmeister America, Inc.



Putzmeister America, Inc.
1733 90th Street
Sturtevant, WI 53177 USA

Phone (262) 886-3200
Toll-free (800) 884-7210
Fax (262) 884-6338

www.PutzmeisterAmerica.com pmr@putzmeister.com

SY 38

Truck-Mounted Concrete Boom Pump

Broadest Value from a Single Provider

SANY Concrete Boom Pumps - Supported by Putzmeister

The SANY pumps supported by Putzmeister America combine the quality of automotive grade manufacturing with the reliability of Putzmeister's elite service and support. The new line of concrete boom pumps will be available in 38M, 49M, 56M, and 66M.

SANY concrete pumps offer surprising value. These pumps are designed around simplicity, cost-effectiveness and reliability. Some of the key attributes that customers have recognized of the pumps already are the easy operation, respectable quality, and low initial investment.

The entire Putzmeister / SANY team is working hard to ensure that with this newly available product line, customers experience the same industry-leading service and support as they do when purchasing Putzmeister equipment.

Toll-Free Hotline
1-800-890-0269

Parts & Service
1-800-884-7210

Top Features & Benefits

1. High-Low Pressure Changeover Switch (SBU)
2. Waterproof Seal on Drive Cylinders
3. Dual Piston Retract
4. Weatherproof SANY Motion Controller (SYMC), Wiring Harnesses and Electrical Connections
5. SANY Liquid Display (SYLD) Interface
6. Ability to self-diagnosis
7. Boom Rotation
8. Trusted Hydraulic Components
9. Rugged Hopper System
10. Automatic OSS

Boom, control and support

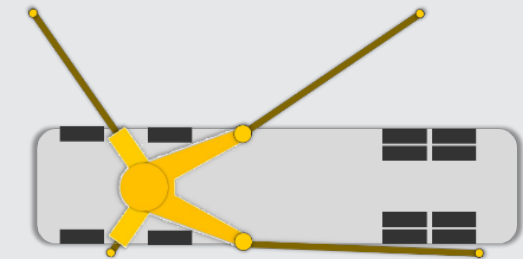
SANY Liquid Display (SYLD)

The SANY Liquid Display (SYLD) interface allows users the ability to quickly conduct diagnostics. The SYLD provides inputs/outputs, bypasses and faults codes to troubleshoot and get your pump to operation.



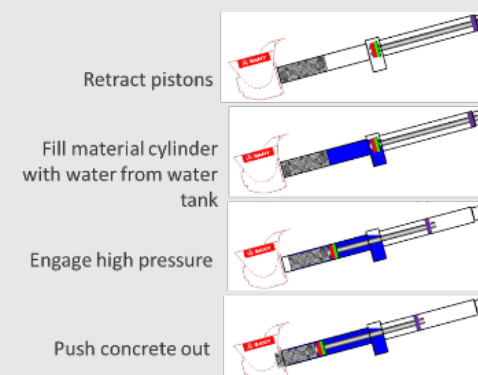
Automatic OSS

SYMC automatically estimates boom rotation area according to pump mode, outriggers, and stabilization feedback.



Dual Piston Retract

Emergency Clean-Out Procedure | In emergency situations, you can retract both delivery pistons, inject water into the material cylinder, and force hardened concrete out through hopper. Avoid disassembly of hopper and chipping material out of material cylinders.



High-Low Pressure Changeover Switch (SBU)

Logic boxes on the pump allow the operator to switch from low to high pressure pumping with just a switch.

High-Low Pressure Changeover Switch located on back panel.



20M CLASS						
30M CLASS						
40M CLASS						
50M CLASS						
60M CLASS						